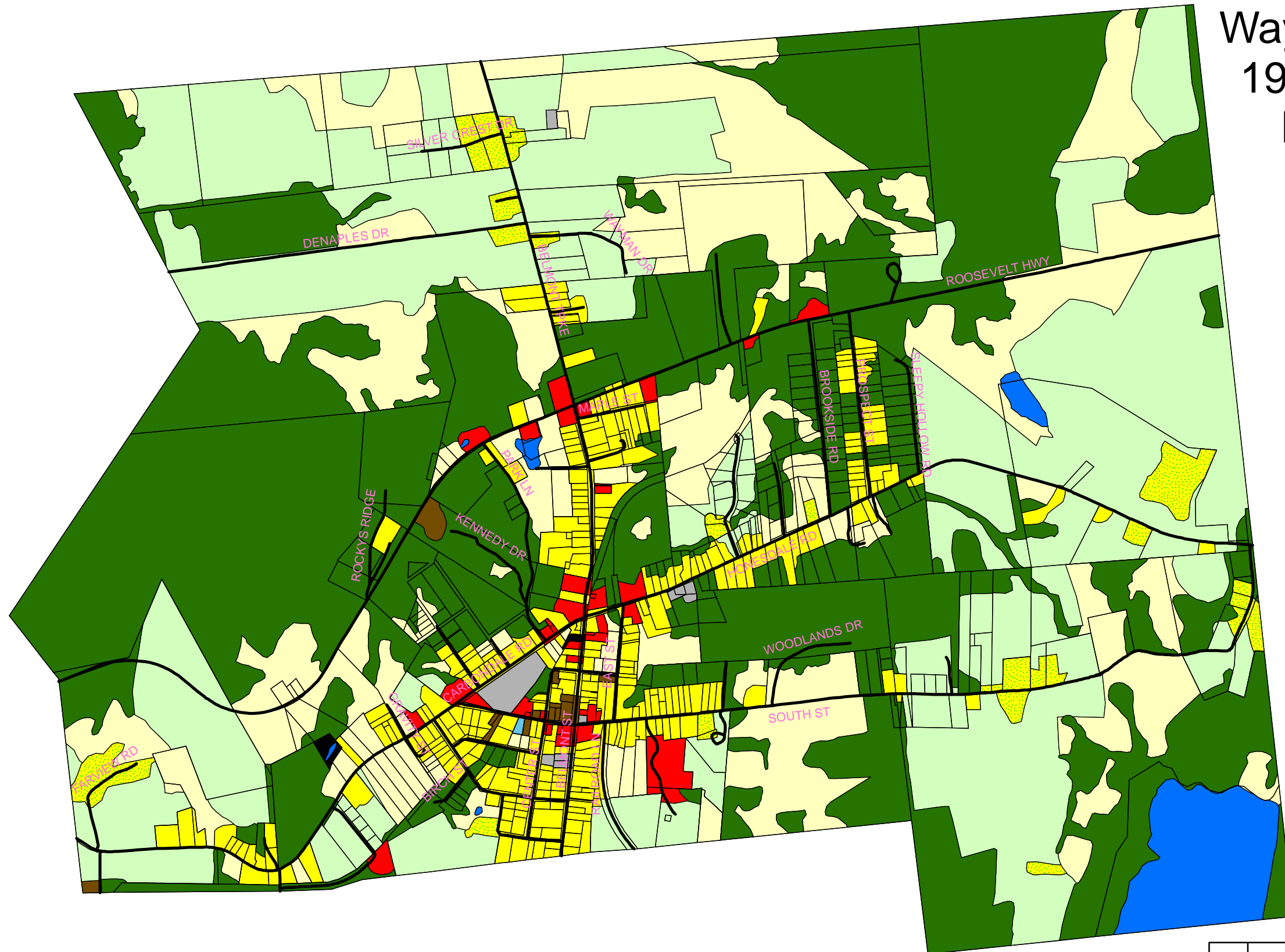


Waymart Borough 1959 Land Use/ Land Cover



Legend

- Cropland
- Farmstead
- Pasture/Brush
- Forest
- Water
- Residential
- Religious
- Government/Institution
- Commercial
- Industrial
- Utilities
- Roads



This project was funded in part by the Wayne County Commissioners along with a grant award from the Pennsylvania Department of Community & Economic Development.

The source of the land use/land cover data was 1959 USDA aerial photography updated with township officials' input and with local citizens' input. The roads and parcel lines shown are from more current data and are shown on this 1959 map to help the user identify locations.

<h1 style="font-size: 48px; margin: 0;">3</h1>	<p>Waymart Borough 1959 Land Use/Land Cover</p>
	<p>Created By: Wayne County Department of Planning</p>
	<p>Wayne County Department of Planning 925 Court Street Honesdale, PA 18431 Phone (570) 253-5970 www.co.wayne.pa.us September, 2006</p>