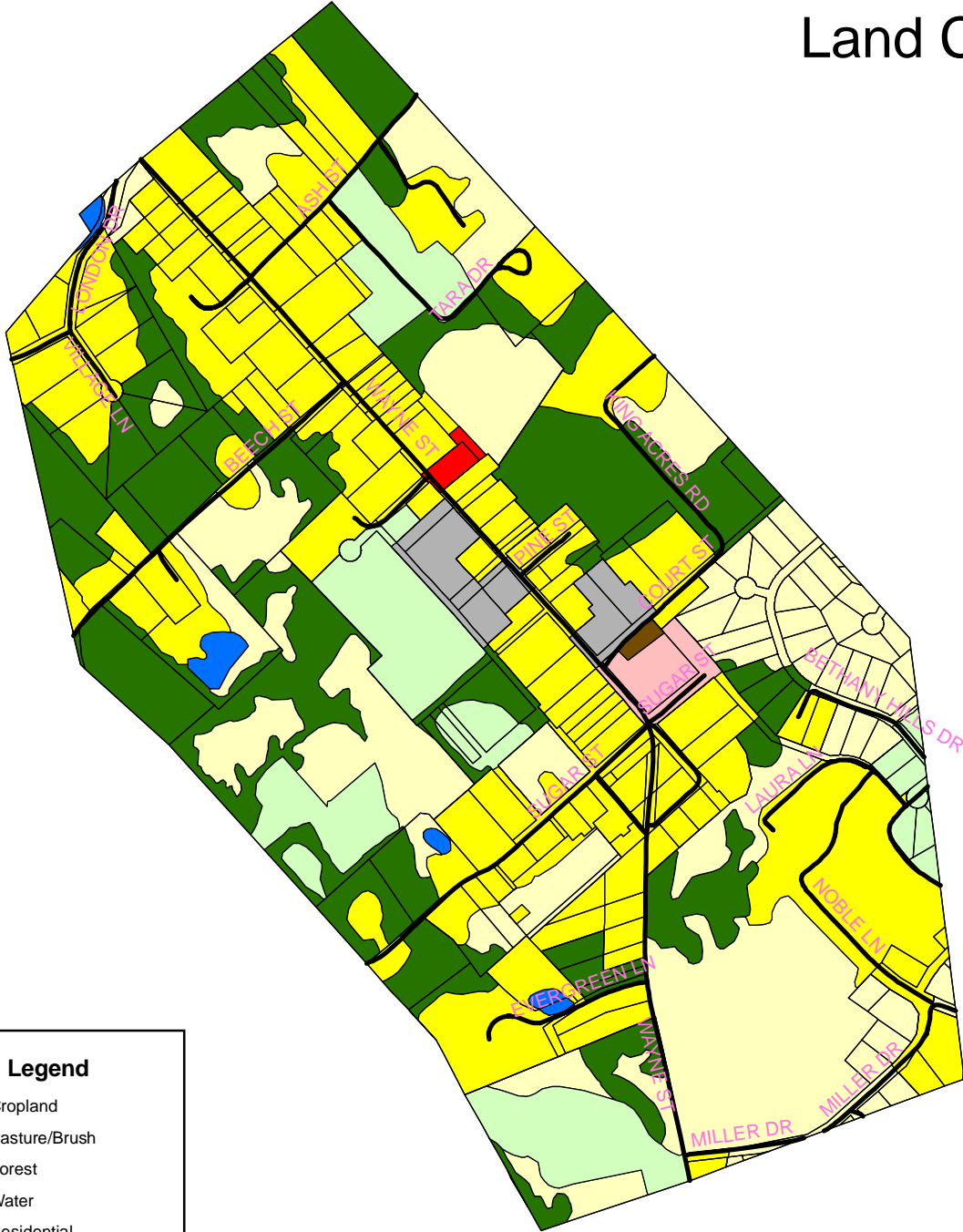


Bethany Borough 2002 Land Use/ Land Cover



Legend

- Cropland
- Pasture/Brush
- Forest
- Water
- Residential
- Religious
- Government/Institution
- Recreational
- Commercial
- Roads

This project was funded in part by the Wayne County Commissioners along with a grant award from the Pennsylvania Department of Community & Economic Development.

The source of the data was 1997 aerial photography taken for the Wayne County 911 Project and updated with 2002 assessment records with township officials'/citizens' input.



3	Bethany Borough 2002 Land Use/Land Cover
	Created By: Wayne County Department of Planning
	<i>Wayne County Department of Planning</i> 925 Court Street Honesdale, PA 18431 Phone (570) 253-5970 www.co.wayne.pa.us September, 2006