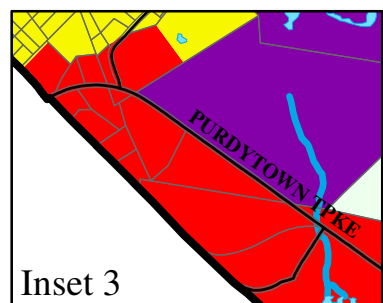
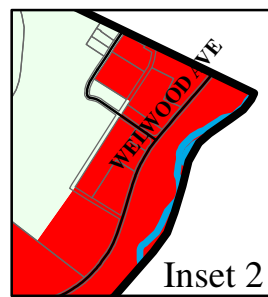
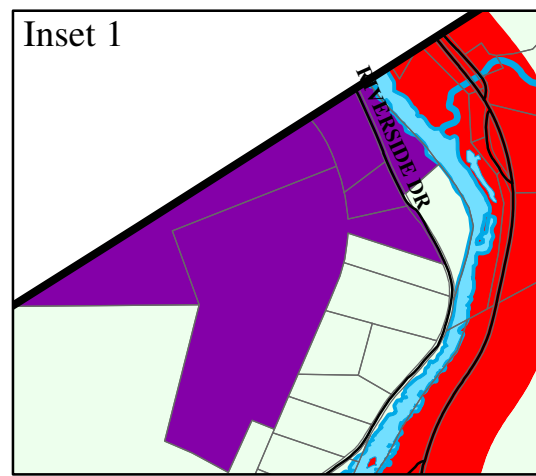


# Palmyra Township, Wayne County, Pennsylvania Zoning Map



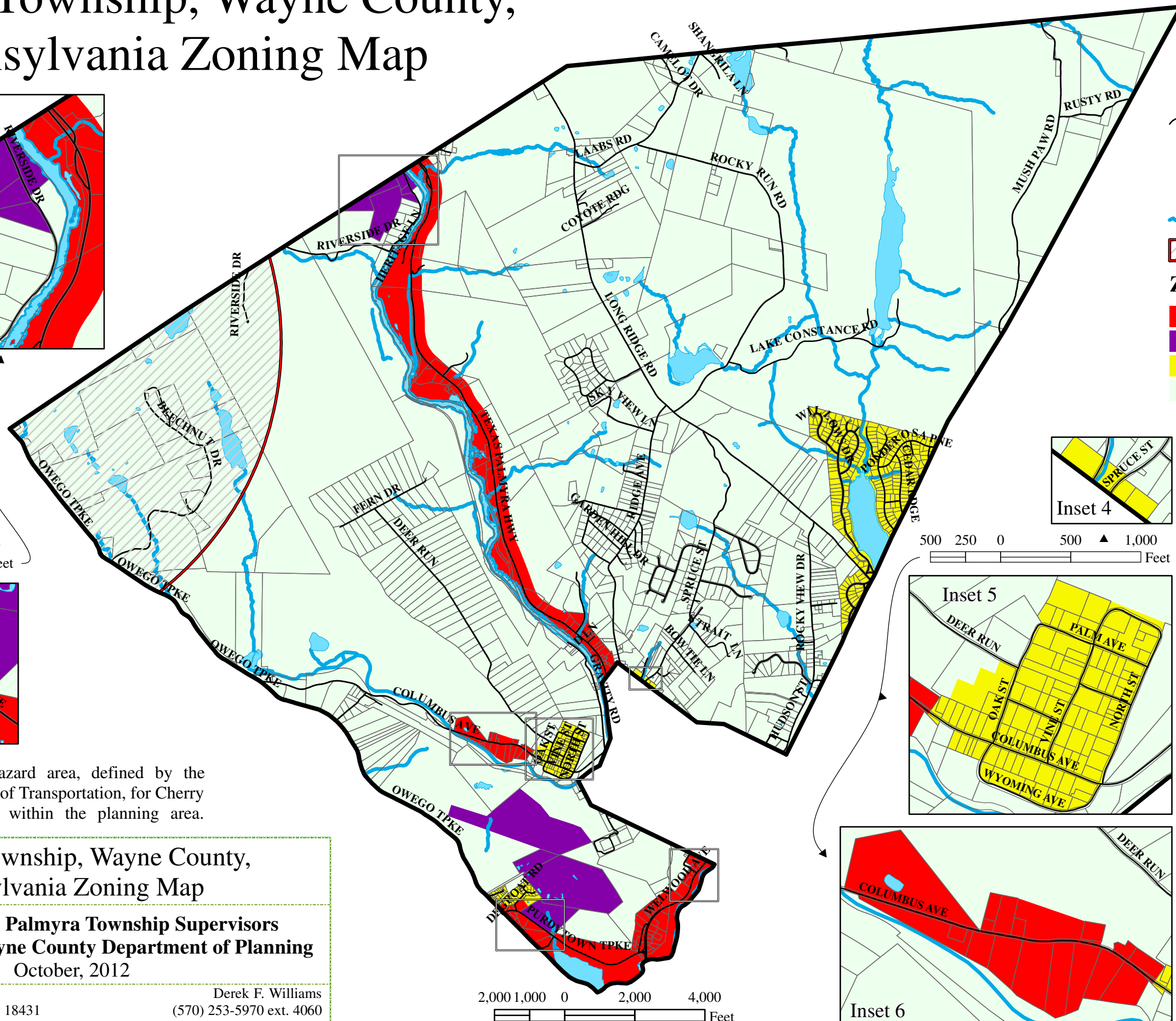
\* Part of the airport hazard area, defined by the Pennsylvania Department of Transportation, for Cherry Ridge Airport that falls within the planning area.

**Palmyra Township, Wayne County,  
Pennsylvania Zoning Map**

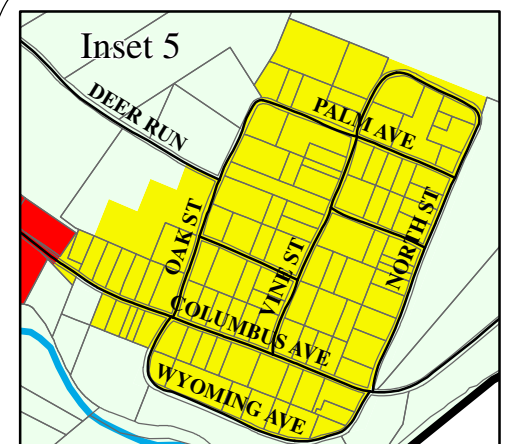
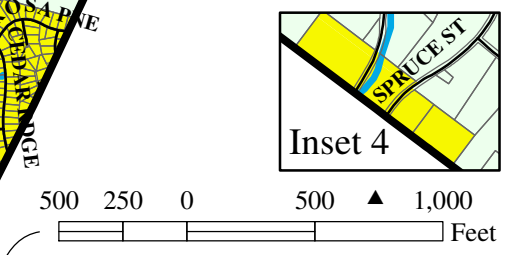
Prepared for the **Palmyra Township Supervisors**  
Prepared by the **Wayne County Department of Planning**  
October, 2012

wcpd@co.wayne.pa.us  
925 Court St. Honesdale, PA 18431

Derek F. Williams  
(570) 253-5970 ext. 4060



- Township Boundary
  - Roads
  - Tax Parcels
  - Water Bodies
  - Water Courses
  - Cherry Ridge Airport Surface Area\*
- Zoning Districts**
- C-1 General Commercial
  - Industrial
  - R-1 Low Density Residential
  - R-R Rural Residential



**Palmyra Township  
Official Zoning Map  
2012**

Adopted in accord with the Pennsylvania Municipalities Planning Code this 5th day of November, 2012, at a dully convened meeting of the Palmyra Township Supervisors, Wayne County, Pennsylvania.

\_\_\_\_\_  
Chairman

\_\_\_\_\_  
Vice Chairman

\_\_\_\_\_  
Supervisor

\_\_\_\_\_  
Attest:

\_\_\_\_\_  
Secretary

**The following Zoning information is for general reference only. Palmyra Township should be contacted for any specific Zoning information needs and/or any amendments potentially affecting the following Zoning information. Refer to the listing on the Municipal Contacts page of this website for current municipal contact information.**

